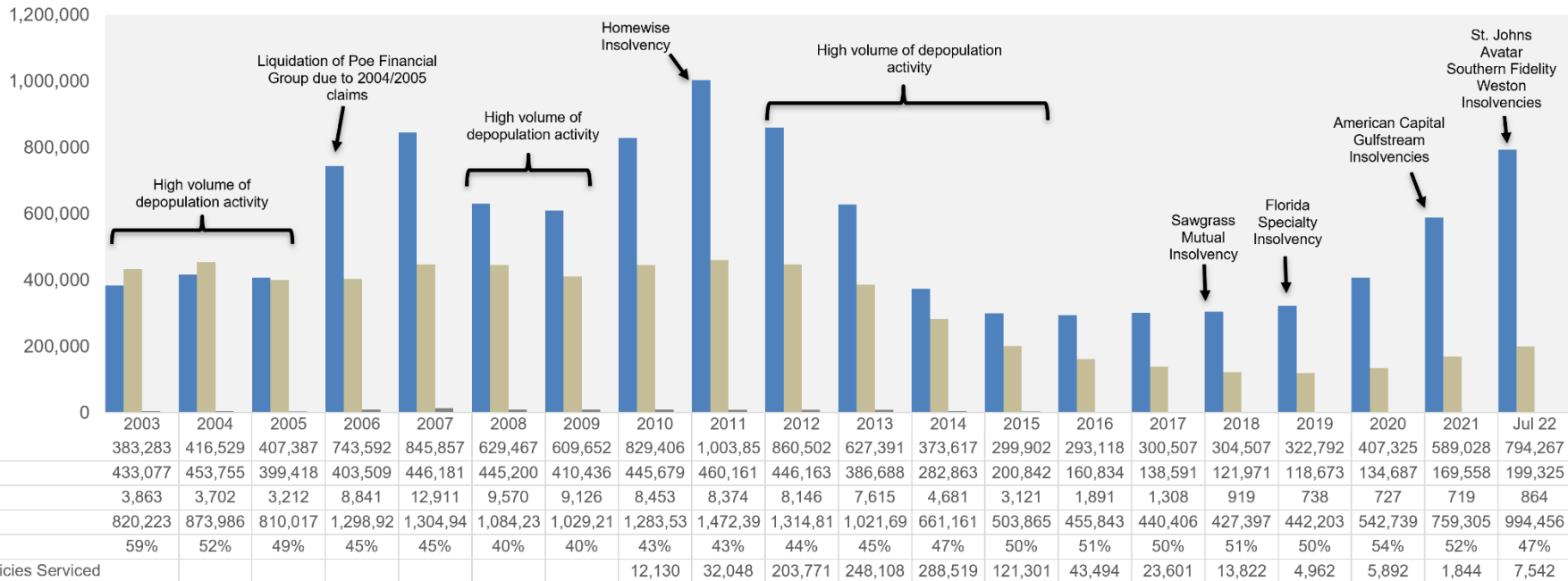


Market Update

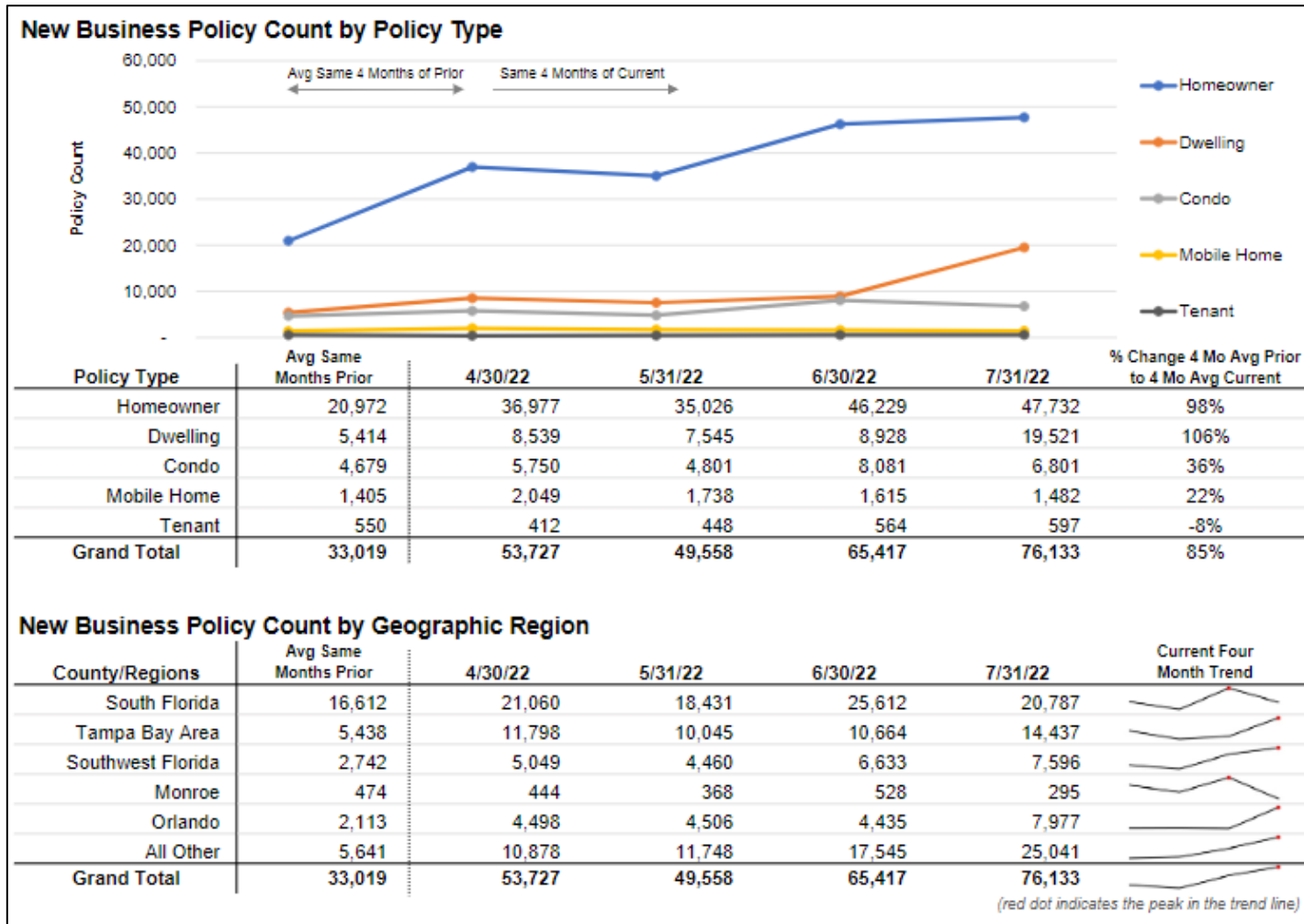
Kelly Booten
Chief Operating Officer





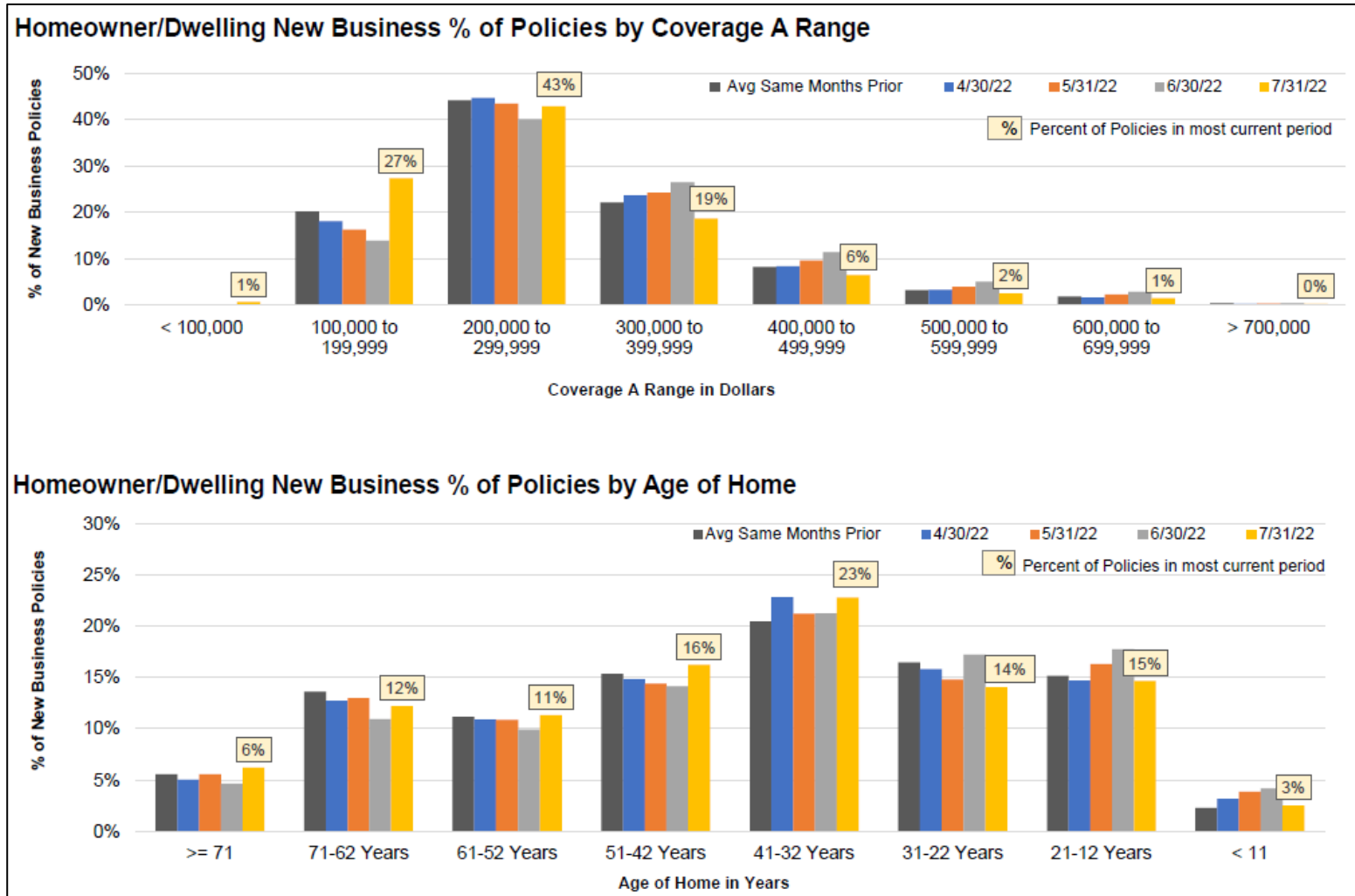
Personal Residential Policy Types (Apr '22 to Jul '22 Average Prior vs. Current)

(includes policies from Avatar, FedNat, Lighthouse, Monarch and Southern Fidelity except as noted)



Personal Residential Policy Types (Apr '22 to Jul '22 Average Prior vs. Current)

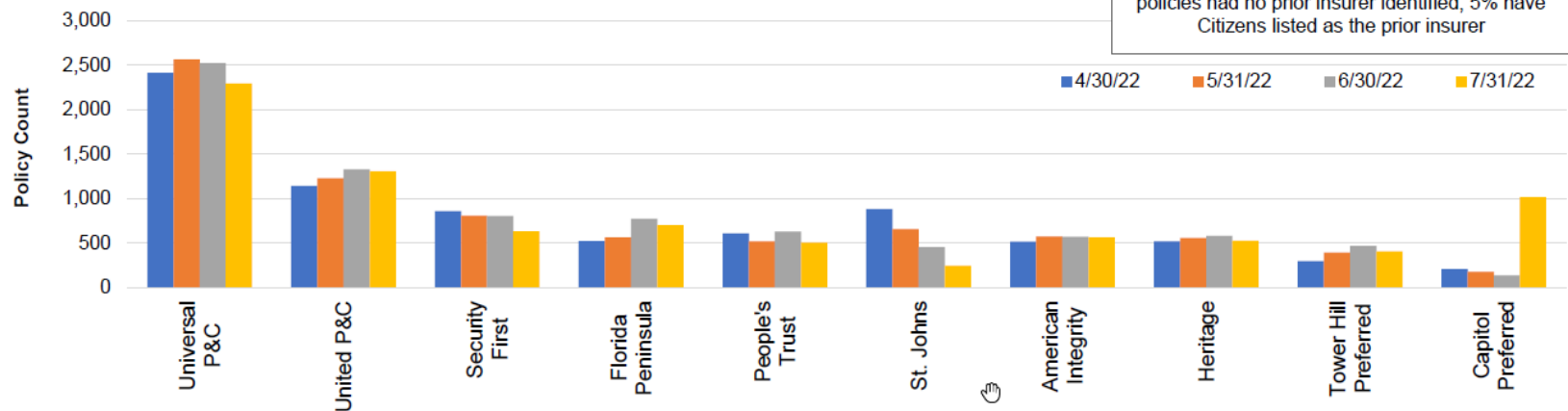
(includes policies from Avatar, FedNat, Lighthouse, Monarch and Southern Fidelity except as noted)



Personal Residential Policy Types (Apr '22 to Jul '22 Average Prior vs. Current)

(includes policies from Avatar, FedNat, Lighthouse, Monarch and Southern Fidelity except as noted)

Multi-Peril New Business Policy Count by Prior Insurer (top 10 in period)



In this 4 month period, 36% of new business policies had no prior insurer identified; 5% have Citizens listed as the prior insurer

Notes:

1. Policy types are defined as follows:

- Homeowner - HO-3, HO-8, HW-2
- Dwelling - DP-1 D, DP-3 D, DW-2
- Condo - HO-6, HW-6, DP-1 C, DP-3 C
- Mobile Home - MHO-3, MDP-1, MW-2, MD-1
- Tenant - HO-4, HW-4, MHO-4, DP-1 T, DP-3 T

2. Regions are defined by county boundary as follows:

- South Florida - Broward, Miami-Dade, Palm Beach
- Tampa Bay Area - Hernando, Hillsborough, Pasco, Pinellas
- Orlando Area - Lake, Orange, Osceola, Seminole, Sumter
- Southwest Florida - Charlotte, Collier, Lee, Manatee, Sarasota
- Monroe County - Monroe
- All Other Counties - Remaining 49 Florida counties not otherwise grouped above

3. Prior Insurer list includes the top 10 by policy count with a multi-peril policy in the current four month period; Citizens, "No Carrier Found"/"null" values and wind only policies are excluded from the graph. Wind only policies are excluded due to prior insurer information, specific to the current ex-wind policy or previous multi peril policy, which can create misleading results. Excludes Avatar which was listed as the prior carrier for 11,917 policies in April, Lighthouse which was listed as the prior carrier for 5,893 policies in May, Monarch and FedNat that were listed as the prior carrier for and 1,426 and 14,952 policies respectively in June and Southern Fidelity that was listed as the prior carrier for 32,111 policies in July.

4. New Business Written is the count of new bound submissions at the month end snapshot



Personal Lines Insolvencies and Early Cancellations

Carrier	Effective Date	Original Policy Count	Total Policies to Citizens	% of Original Policy Count Written by Citizens	Consent Order Comments	Top 3 Counties	Top 3 Policy Forms
Florida Specialty	11/1/2019	90,059	22,454	24%	Insolvency	Orange, Polk, Lee	HO-3, MH-3, HO-6
Capitol Preferred	6/1/2020	23,000	1,036	5%	OIR-Ordered Early Cancellations	Orange, Palm Beach, Seminole	HO-3, HO-6, DP-3
Gulfstream	6/1/2021	14,328	3,034	21%	OIR-Ordered Early Cancellations	Miami-Dade, Palm Beach, Broward	HO-3, DP-3, HO-6
Universal	6/1/2021	13,294	2,781	21%	OIR-Ordered Early Cancellations	Miami-Dade, Okaloosa, Palm Beach	HO-3, DP-3, DP-1
Southern Fidelity	6/1/2021	2,178	465	21%	OIR-Ordered Early Cancellations	Palm Beach, Miami-Dade, Broward	HO-3, DP-3, DP-1
Gulfstream	7/1/2021	32,324	5,048	16%	Insolvency	Miami-Dade, Palm Beach, Broward	HO-3, DP-3, HO-6
Avatar	4/13/2022	36,569	14,854	41%	Insolvency	Hillsborough, Pinellas, Palm Beach	HO-3, DP-3, HO-6
Lighthouse	5/4/2022	27,244	7,571	28%	Insolvency	Pinellas, Hillsborough, Duval	HO-3, DP-3, HO-6
FedNat	6/29/2022	65,442	19,644	30%	OIR-Ordered Early Cancellations	Palm Beach, Broward, Escambia	HO-3, HO-6, DP-3
Southern Fidelity	7/15/2022	77,008	27,088	35%	Insolvency	Hillsborough, Duval, Orange	HO-3, DP-3, DP-1
TOTAL		381,446	103,975	27%			



Commercial Lines Insolvencies and Early Cancellations

Carrier	Effective Date	Original Policy Count	Total Policies Submitted (Unbound) to Citizens	Total Policies Written (Bound) by Citizens	% of Original Policy Count Written (Bound) by Citizens	Consent Order Comments	Top Counties	Top 3 Policy Forms
Weston (Midterm cancellation)	4/15/2021	391	94	57	14.6%	OIR-Ordered Early Cancellations	Miami Dade (50%), Broward, Palm Beach	CRW, CNRW
American Capital Assurance - AMCAP	5/14/2021	1,700	52	20	1.2%	Insolvency	Pinellas, Collier	CRM, CRW, CNRW
Avatar Property & Casualty	4/13/2022	153	55	44	28.8%	Insolvency	Pinellas, Miami-Dade, Hillsborough	CRM, CNRM, CRW, CNRW
Weston	9/7/2022	2,963	TBD	TBD	TBD	Insolvency	TBD	CNRW, CRW

6/21/2022 - Capacity downgraded – stopped writing new business